

7920 NORFOLK AVE BETHESDA, MD

2,266 SF AND 3,830 BASEMENT SPACE AVAILABLE





RAPPAPORT
CULTIVATING PLACES



7920 NORFOLK AVE BETHESDA, MD

- | 2,266 SF ideal for boutique fitness and coffee bar concepts as well as 2,277 SF corner space perfect for credit retailers in a market with \$6.3B in deposits
- | Located in the heart of downtown Bethesda, just three blocks away from the new Marriott HQ and minutes from Bethesda Row
- | A short 10-minute walk to the Bethesda Metro Station
- | Affluent residential community with household incomes of \$132,043 within a 3-mile radius
- | 3,830 SF basement space available, previously occupied by fitness operator

DEMOGRAPHICS 2024

	1 MILE	3 MILES	5 MILES
 POPULATION	23,583	150,931	440,551
 DAYTIME POPULATION	56,078	127,160	273,635
 HOUSEHOLD INCOME	\$187,675	\$216,127	\$169,583
 TRAFFIC COUNTS	39,000 on Wisconsin Avenue		

AREA RETAILERS



**7920 NORFOLK AVE
BETHESDA, MD**

MARYLAND
187



MARYLAND
355

WISCONSIN AVENUE 39,300 VPD

WOODMONT AVENUE

NORFOLK AVENUE

OLD GEORGETOWN ROAD 30,400 VPD

SUBURBAN HOSPITAL
4,043+ Daytime Population

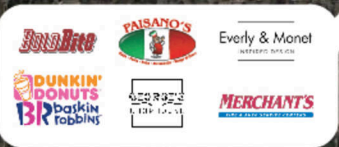
**NATIONAL INSTITUTES
OF HEALTH CLINICAL CENTER**
2,668+ Daytime Population

**WALTER REED ARMY
MEDICAL CENTER**
7,345+ Daytime Population



RESIDENTIAL
5,045 Population
2,201 Households

RESIDENTIAL
7,547 Population
4,114 Households



EAST WEST HIGHWAY



MONTGOMERY LANE

HAMPDEN LANE

ELM STREET

BETHESDA AVENUE



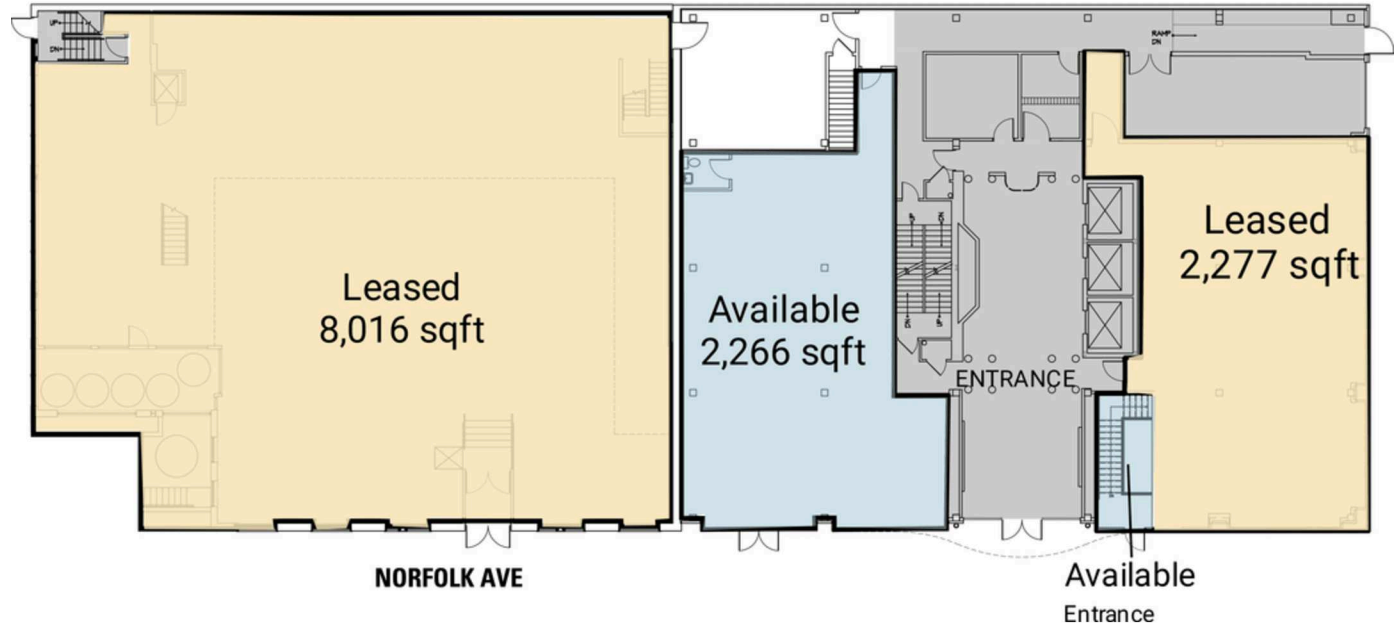
SITE PLAN

7920 NORFOLK AVE | BETHESDA, MD

2,266 SF AVAILABLE

Space	Sq. Ft	Tenant Name
Entrance		Available
100	2,277	Leased
101	2,266	Available
102	8,016	Leased

FIRST FLOOR

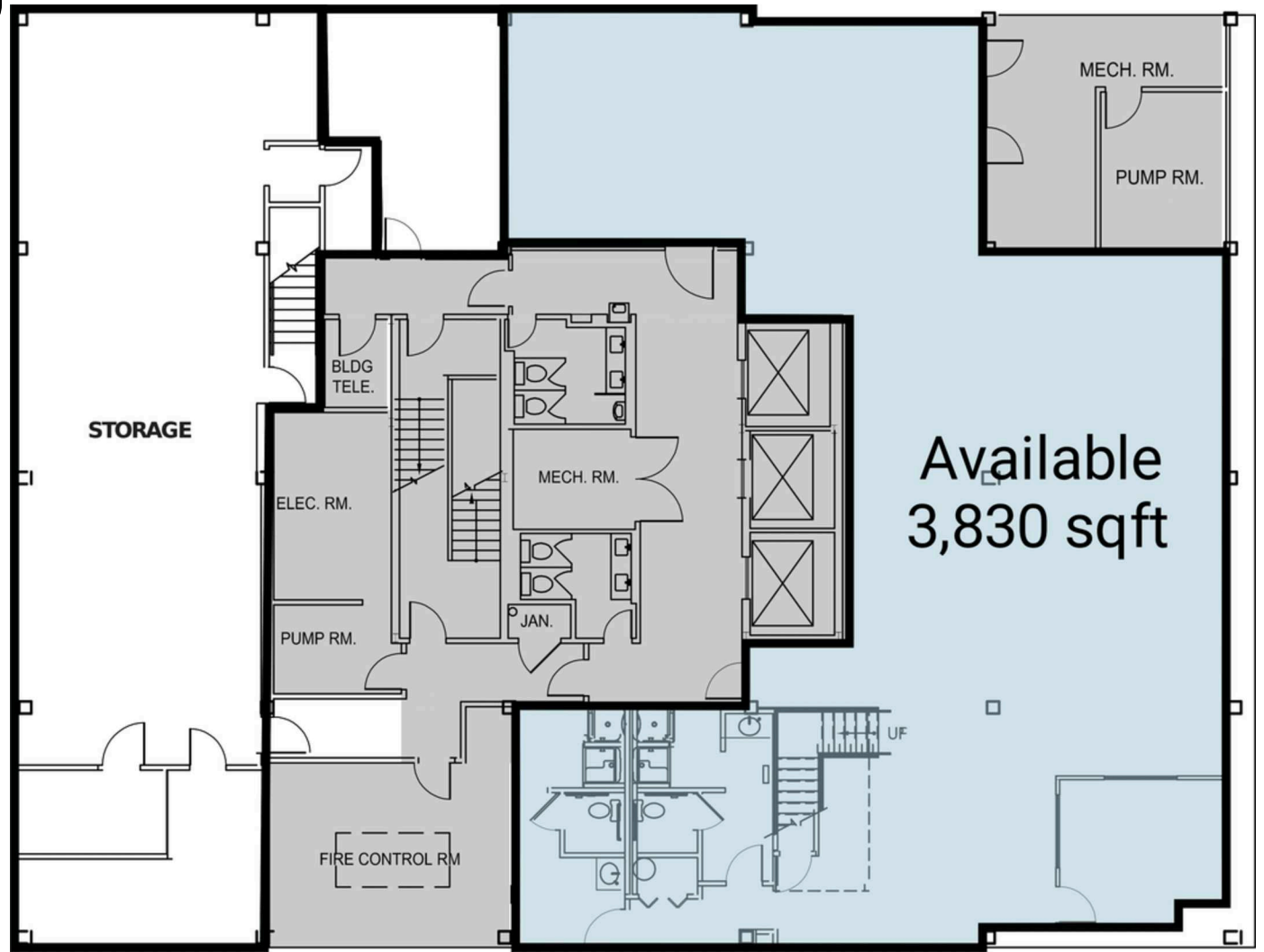


BASEMENT

7920 NORFOLK AVE | BETHESDA, MD

3,830 SF AVAILABLE

Space	Sq. Ft	Tenant Name
01	3,830	Available





7920 NORFOLK AVE | 7920 NORFOLK AVE, BETHESDA, MD

Mike Howard | mhoward@rappaportco.com | 571.382.1219

Bill Dickinson | bdickinson@rappaportco.com | 703.310.6983

Melissa Webb | mwebb@rappaportco.com | 703.980.6829

rappaportco.com