

# CENTRAL PARK CORPORATE CENTER

FREDERICKSBURG, VA

365 - 16,000 SF AVAILABLE








# CENTRAL PARK CORPORATE CENTER

## FREDERICKSBURG, VA

- | A variety of office spaces available with an on-site property manager
- | Data providers include Cox, Verizon, and Comcast
- | Beautiful landscaping and well-maintained facilities with abundant parking
- | Spectacular array of amenities, including restaurants, banking, shopping, fitness, and more
- | Centrally located between Washington, D.C. and Richmond, just off I-95
- | 15 bus routes offering great access to public transportation

### DEMOGRAPHICS 2024

	3 MILES	5 MILES	10 MILES
 POPULATION	46,745	122,363	201,705
 HOUSEHOLD INCOME	\$83,423	\$93,231	\$101,673
 TRAFFIC COUNTS	80,000 on Central Park Blvd at Route 3		

### AREA RETAILERS



# GROUND FLOOR SITE PLAN

CENTRAL PARK CORPORATE CENTER | FREDERICKSBURG, VA

365 - 16,000 SF AVAILABLE



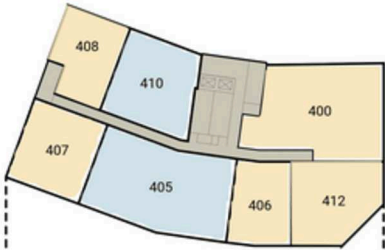
# UPPER FLOOR SITE PLAN

CENTRAL PARK CORPORATE CENTER | FREDERICKSBURG, VA

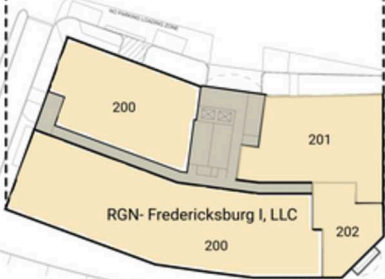
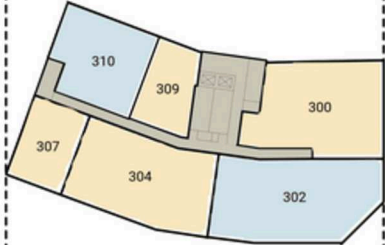
365 - 16,000 SF AVAILABLE



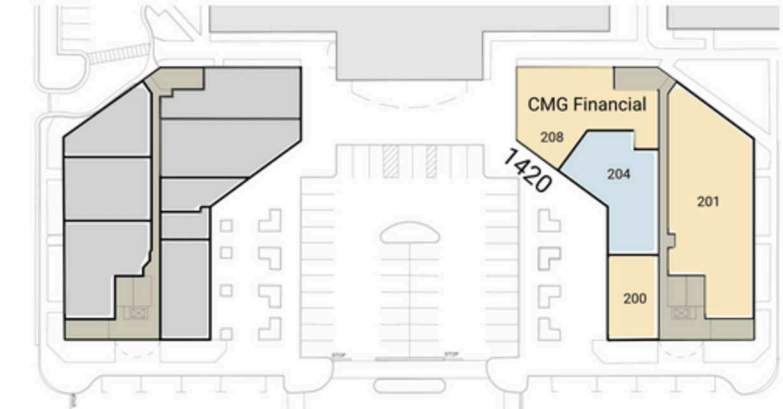
FOURTH LEVEL PLAN



THIRD LEVEL PLAN



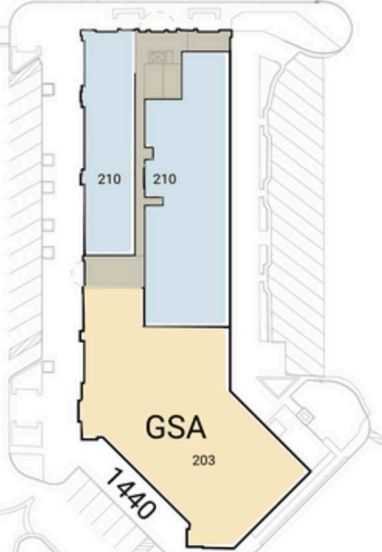
1320



1420



1340



1440

SECOND LEVEL PLAN



# CENTRAL PARK CORPORATE CENTER

FREDERICKSBURG, VA





**CENTRAL PARK CORPORATE CENTER | 1320 CENTRAL PARK BLVD, FREDERICKSBURG, VA**

**Susan Bourgeois | [sbourgeois@rappaportco.com](mailto:sbourgeois@rappaportco.com) | 571.382.1288**

**[rappaportco.com](http://rappaportco.com)**