

# THREE COLLECTIVE AT SKYLINE

FALLS CHURCH, VA

TURNKEY RESTAURANT OPPORTUNITY  
1,213 - 3,190 SF AVAILABLE

RAPPAPORT  
CULTIVATING PLACES

RESIDENTIAL NOW

45%  
LEASED









# THREE COLLECTIVE AT SKYLINE

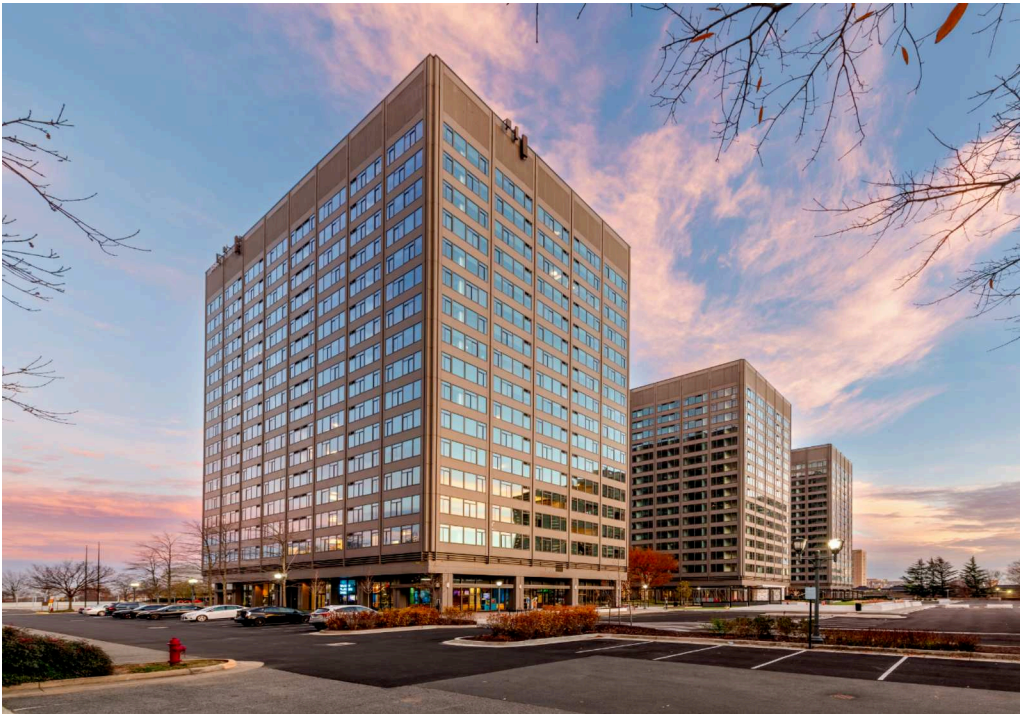
## FALLS CHURCH, VA

- | Ground floor retail opportunity ideal for coffee shops, quick-service and full-service restaurants, service and fitness users
- | Located immediately adjacent to over 3,600 residential units, 675 live/work units, and 1.9M SF of office space
- | In the Baileys Crossroads submarket with high visibility from Route 7 and nearby shopping centers
- | Surrounded by national and regional tenants like Trader Joe’s, REI, World Market, Chipotle, District Taco, and Starbucks
- | Currently housing 429 occupants, with Three Collective expected to reach 1,000+ at stabilization

### DEMOGRAPHICS 2025

	1 MILE	3 MILES	5 MILES
 POPULATION	50,535	291,750	597,265
 DAYTIME POPULATION	55,266	341,265	714,014
 HOUSEHOLD INCOME	\$99,270	\$123,925	\$140,191
 TRAFFIC COUNTS	38,333 on Leesburg Pike		

### CO-TENANTS





THREE COLLECTIVE AT SKYLINE  
FALLS CHURCH, VA

SEVEN CORNERS



WILLSTON CENTER I



WILLSTON CENTER II



CROSSROADS CENTER

OLD NAVY

BED BATH & BEYOND

ULTA BEAUTY

DICK'S SPORTING GOODS

ROSS DRESS FOR LESS

CROSSROADS PLACE



LEESBURG PIKE PLAZA



BARCROFT PLAZA  
SHOPPING CENTER



BAILEY'S CROSSROADS  
SHOPPING CENTER



Three Collective

WALMART  
FRIDAYS

LEESBURG PIKE 35,000 VPD

COLUMBIA PIKE 31,000 VPD





**THREE COLLECTIVE AT SKYLINE**  
FALLS CHURCH, VA

SKYLINE TOWER

LEESBURG PIKE 35,000 VPD



S GEORGE MASON DR

1

2

3

Three Collective

SKYLINE PARK



## SITE PLAN

THREE COLLECTIVE AT SKYLINE | FALLS CHURCH, VA

1,213 - 3,190 SF AVAILABLE



**BUILDING 1**  
**SUITE A - 3,190 SF (VENTED)**



**BUILDING 2**  
**SUITE B - 1,473 SF**

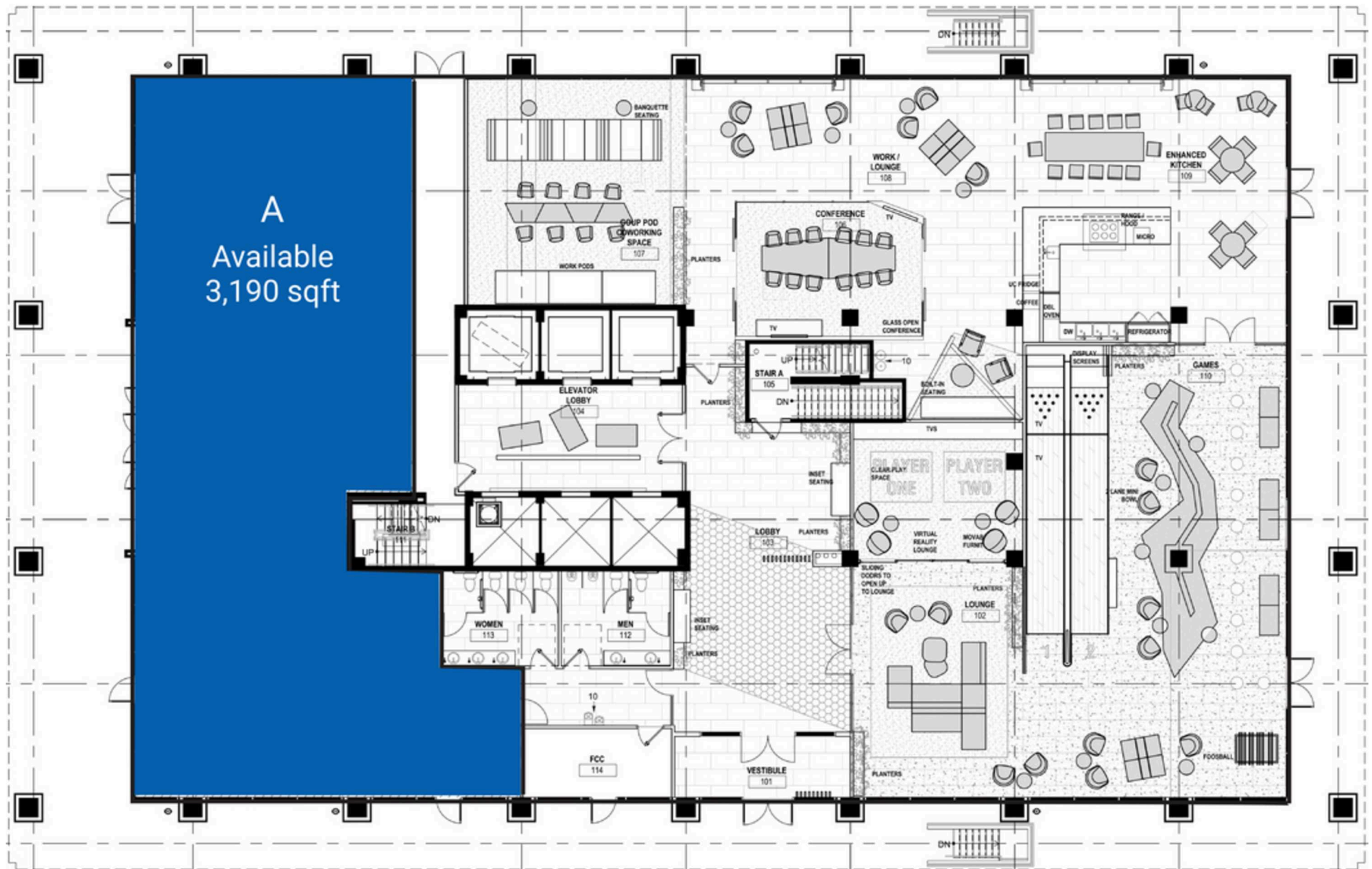


**BUILDING 3**  
**SUITE C - 1,213 SF**  
**SUITE D - 1,493 SF**

## BUILDING 1

THREE COLLECTIVE AT SKYLINE | FALLS CHURCH, VA

3,190 SF AVAILABLE



## BUILDING 2

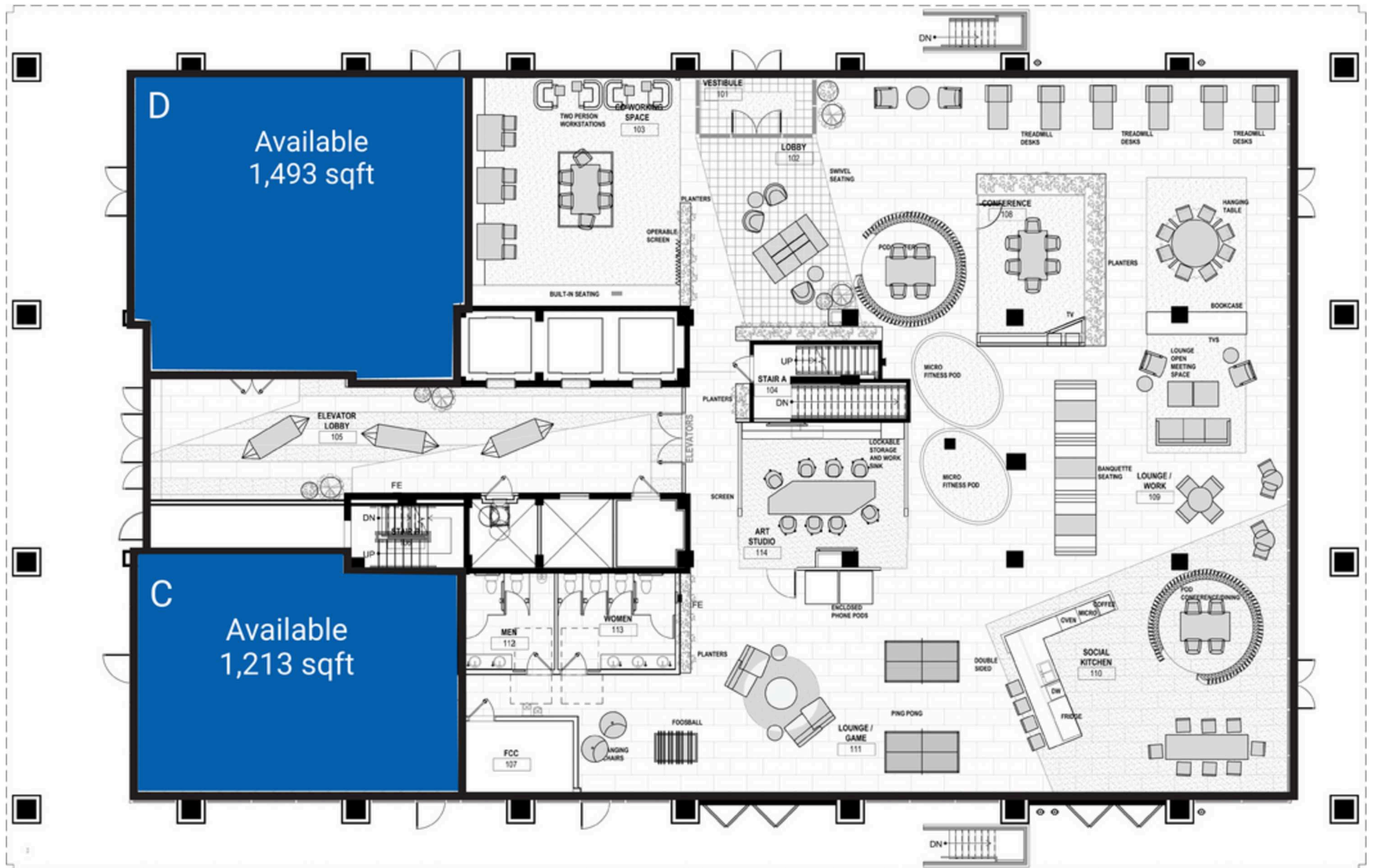
THREE COLLECTIVE AT SKYLINE | FALLS CHURCH, VA

1,473 SF AVAILABLE





**1,213 - 1,493 SF AVAILABLE**







**THREE COLLECTIVE AT SKYLINE | 5203 LEESBURG PIKE, FALLS CHURCH, VA**

**Bill Dickinson | [bdickinson@rappaportco.com](mailto:bdickinson@rappaportco.com) | 703.310.6983**

**Zach Elcano | [zelcano@rappaportco.com](mailto:zelcano@rappaportco.com) | 571.382.1228**

**[rappaportco.com](http://rappaportco.com)**