

2840 RICHMOND HIGHWAY

STAFFORD, VA

31,000 SF SITE WITH DRIVE-THRU AVAILABLE



RAPPAPORT
CULTIVATING PLACES

FUTURE DEVELOPMENT

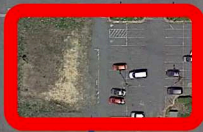


AQUIA 15
256 Apartments



I-95 145,000 VPD

RICHMOND HIGHWAY 31,975 VPD







2840 RICHMOND HIGHWAY

2840 RICHMOND HIGHWAY

STAFFORD, VA

- | 7,000 SF pad building with drive thru available with Ground Lease or Build-to-suit building
- | Strategically located on Jefferson Davis Highway at I-95 & Route 610 (exit 143) offering over 70,000 vehicles per day
- | Site located adjacent to newly built 256-unit apartment complex and within close proximity to several hotels
- | In close proximity to retailers like Starbucks, Walmart, Target, and more
- | Pad site is 31,000 SF and can accommodate 7,000 SF footprint
- | Zoning is PTND SD-C

DEMOGRAPHICS 2025

	1 MILE	3 MILES	5 MILES
 POPULATION	9,211	63,701	88,909
 DAYTIME POPULATION	6,885	45,482	68,452
 HOUSEHOLD INCOME	\$123,490	\$130,946	\$138,935
 TRAFFIC COUNTS	31,975 on Richmond Highway		

CO-TENANTS



2840 RICHMOND HIGHWAY
STAFFORD, VA



GARRISONVILLE ROAD 46,000 VPD



I-95 145,000 VPD

RICHMOND HIGHWAY 31,975 VPD

2840 RICHMOND
HIGHWAY

HAMPTON OAKS
ELEMENTARY SCHOOL

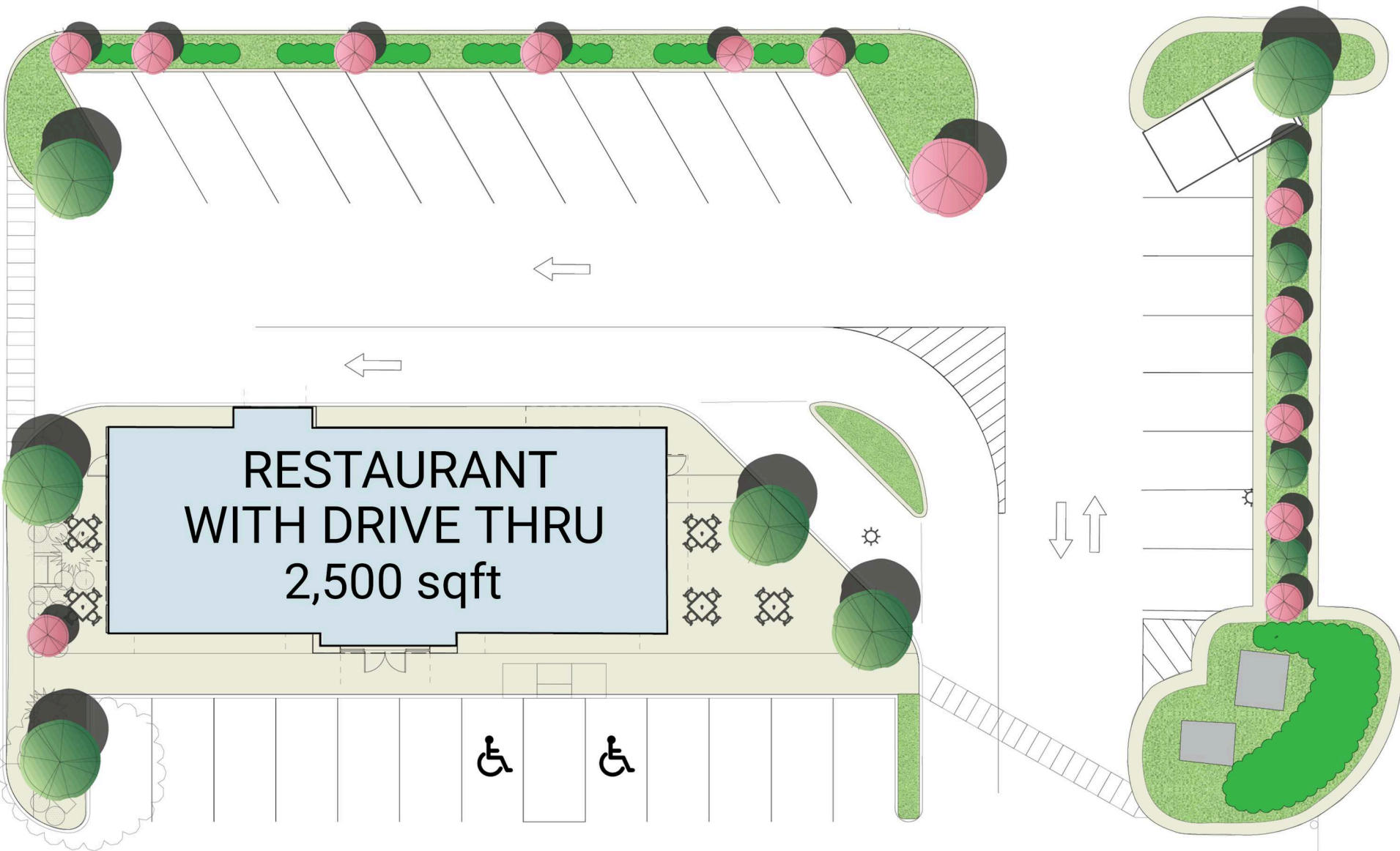


AQUIA HARBOR
3,000 Residential Units

SITE PLAN

2840 RICHMOND HIGHWAY | STAFFORD, VA

31,000 SF PAD SITE WITH DRIVE-THRU AVAILABLE



RENDERING

2840 RICHMOND HIGHWAY | STAFFORD, VA

31,000 SF PAD SITE WITH DRIVE-THRU AVAILABLE



FRONT / SIDE VIEW



DRIVE-THRU VIEW



2840 RICHMOND HIGHWAY | 2840 RICHMOND HIGHWAY, STAFFORD, VA

Greg Hull | ghull@rappaportco.com | 571.382.1221

rappaportco.com