

# SPRING VALLEY VILLAGE OFFICE

WASHINGTON, DC

EXECUTIVE SUITES AVAILABLE

RAPPAPORT  
CULTIVATING PLACES







# SPRING VALLEY VILLAGE OFFICE

## WASHINGTON, DC

- | Thoughtfully designed office space featuring private offices, common area with kitchenette, coffee stations, conference room, huddle rooms, and more
- | Originally developed in 1939, fully renovated in 2020
- | Designated surface parking on-site
- | Located alongside fully-leased trophy shopping center on Massachusetts Ave in Washington, D.C.
- | Located 3 miles south of Bethesda, and 3 miles north of Georgetown. Half mile from American University with 14,800 students

### DEMOGRAPHICS 2025

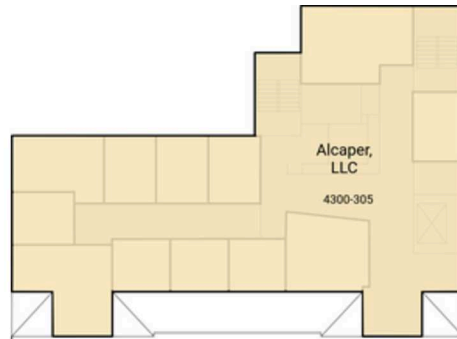
	.25 MILE	.5 MILE	1 MILE
 POPULATION	1,163	4,980	20,837
 DAYTIME POPULATION	207	3,564	10,255
 HOUSEHOLD INCOME	\$309,959	\$377,226	\$321,606
 TRAFFIC COUNTS	19,599 on Massachusetts Ave NW		

### AREA RETAILERS

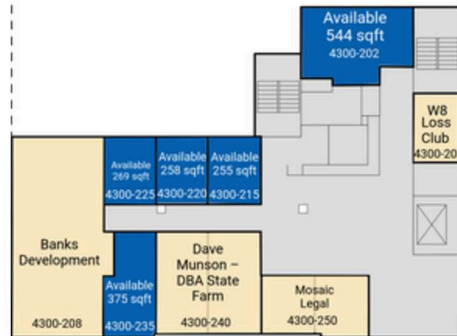


## SITE PLAN

SPRING VALLEY VILLAGE OFFICE | WASHINGTON, DC  
EXECUTIVE SUITES AVAILABLE



THIRD LEVEL PLAN

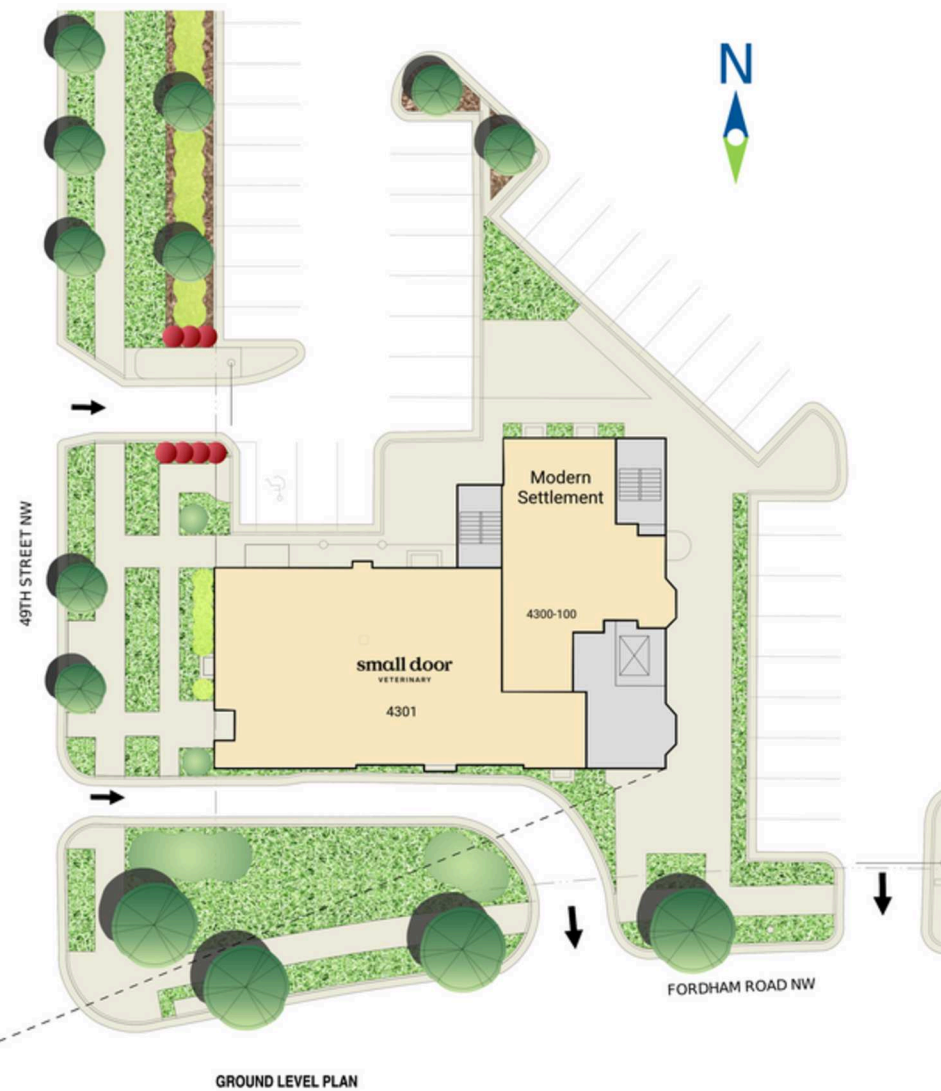


SECOND LEVEL PLAN



LOWER LEVEL PLAN

Space is Best Fit for Fitness Users



## SPRING VALLEY VILLAGE OFFICE

WASHINGTON, DC





**SPRING VALLEY VILLAGE OFFICE | 4300 FORDHAM ROAD NW, WASHINGTON, DC**

**Bill Dickinson | [bdickinson@rappaportco.com](mailto:bdickinson@rappaportco.com) | 703.310.6983**

**Mike Howard | [mhoward@rappaportco.com](mailto:mhoward@rappaportco.com) | 571.382.1219**

**Emily Whalen | [ewhalen@rappaportco.com](mailto:ewhalen@rappaportco.com) | 860.906.2413**

**[rappaportco.com](http://rappaportco.com)**