



# Spring Valley Village Office

Washington, DC

255 - 2,578 SF available



# Washington

District of Columbia



## 2025 Demographics

	1 mi.	3 mi.	5 mi.
<b>Population</b>	1,176	4,289	20,092
<b>Daytime Population</b>	243	923	8,649
<b>Household Income</b>	\$492,446	\$482,678	\$414,665
<b>Traffic Counts</b>	19,599 on Massachusetts Ave NW		
<b>Area Retailers</b>			

**Crate & Barrel**

**Capital One**



**COMPASS COFFEE**

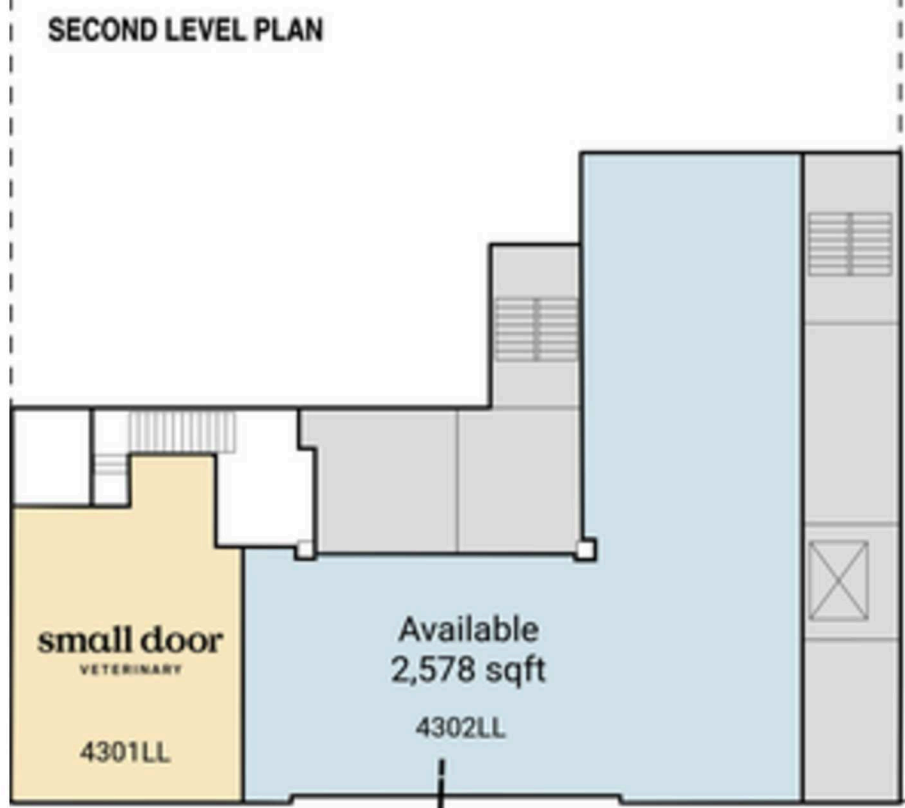
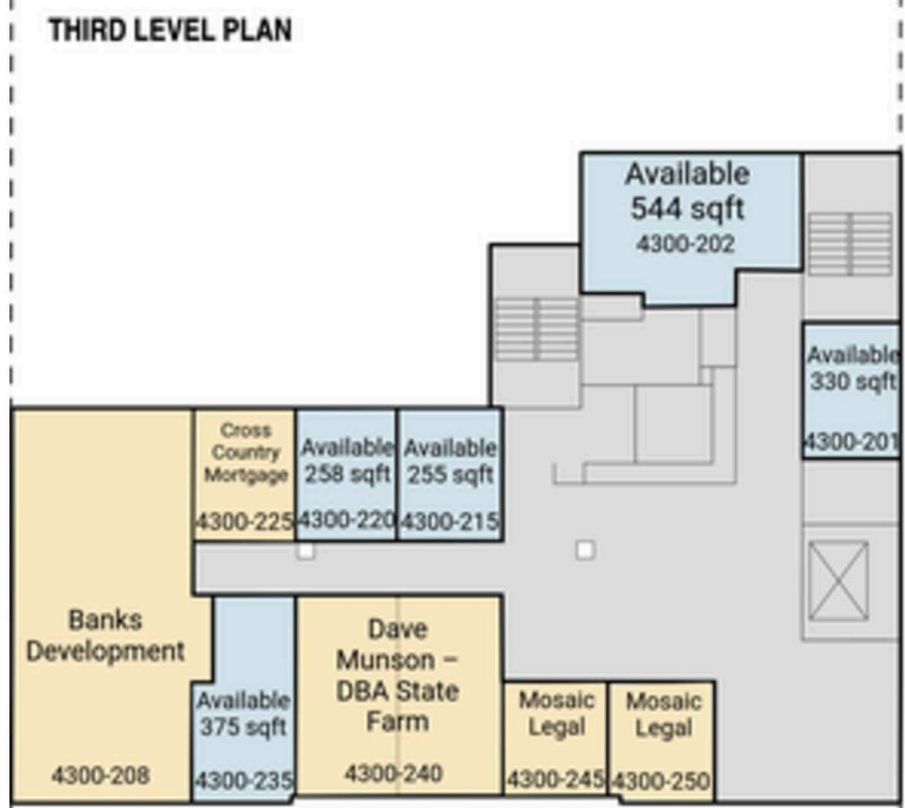
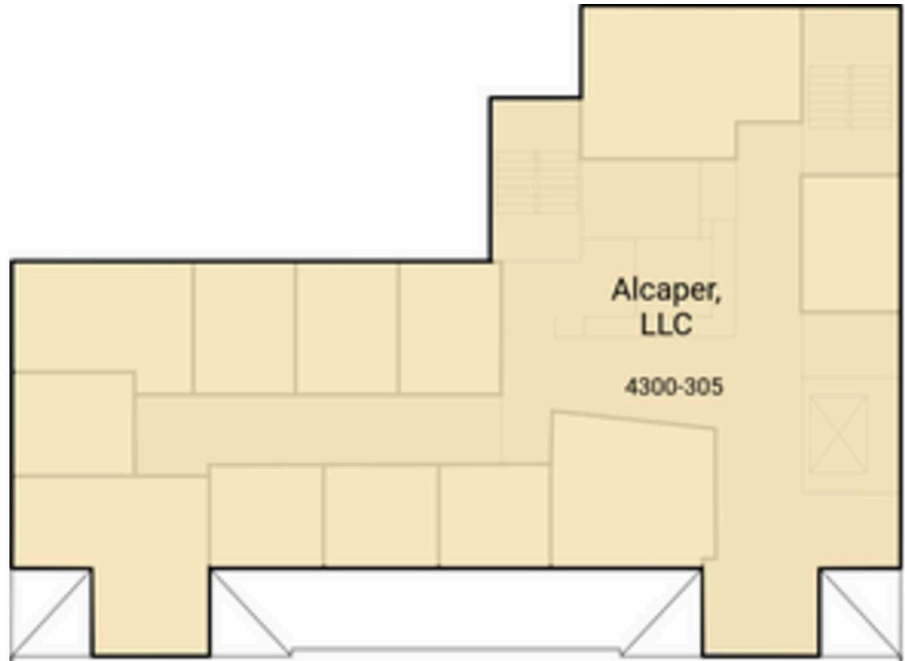
**small door**  
VETERINARY



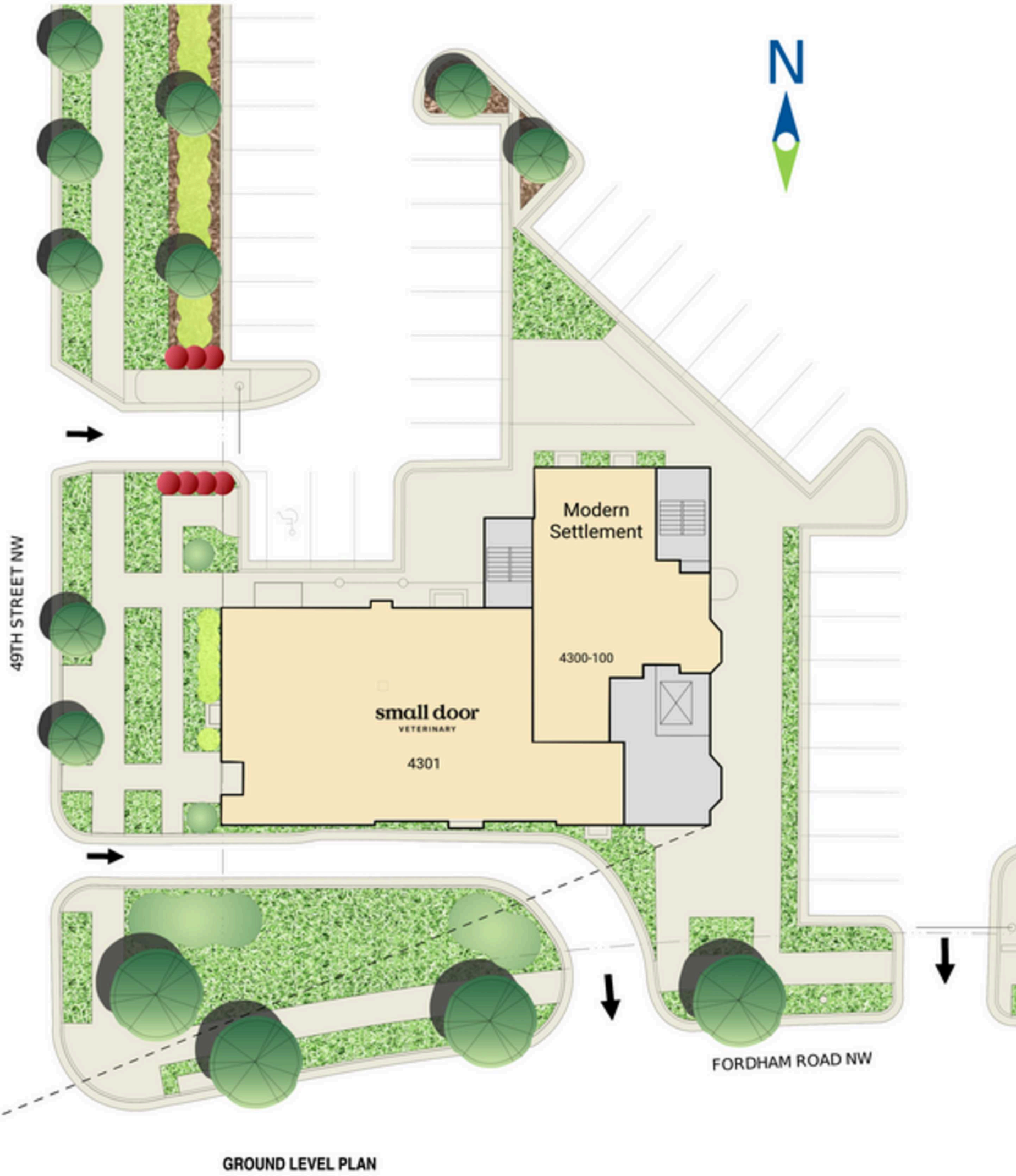
# Site Plan

255 - 2,578 SF available

● Space Available



Space is Best Fit for Fitness Users



# Tenant List

Space #	Sq. Ft.	Tenant
4300-100	-	Modern Settlement
4300-201	330	Available
4300-202	544	Available
4300-208	-	Banks Development
4300-215	255	Available

Space #	Sq. Ft.	Tenant
4300-220	258	Available
4300-225	-	Cross Country Mortgage
4300-235	375	Available
4300-240	-	Dave Munson – DBA State Farm
4300-245	-	Mosaic Legal

Space #	Sq. Ft.	Tenant
4300-250	-	Mosaic Legal
4300-305	-	Alcaper, LLC
4301	-	Small Door Veterinary
4301LL	-	Small Door Veterinary
4302LL	2,578	Available

# The Property



**Discover your next retail opportunity at**  
**rappaportco.com**



**WASHINGTON, D.C. | MARYLAND | VIRGINIA**

**SPRING VALLEY VILLAGE OFFICE | 4300 FORDHAM ROAD NW, WASHINGTON, DC**

**Bill Dickinson | [bdickinson@rappaportco.com](mailto:bdickinson@rappaportco.com) | 703.310.6983**

**Mike Howard | [mhoward@rappaportco.com](mailto:mhoward@rappaportco.com) | 571.382.1219**

**Emily Whalen | [ewhalen@rappaportco.com](mailto:ewhalen@rappaportco.com) | 860.906.2413**