



Georgetown Shops

Washington, DC

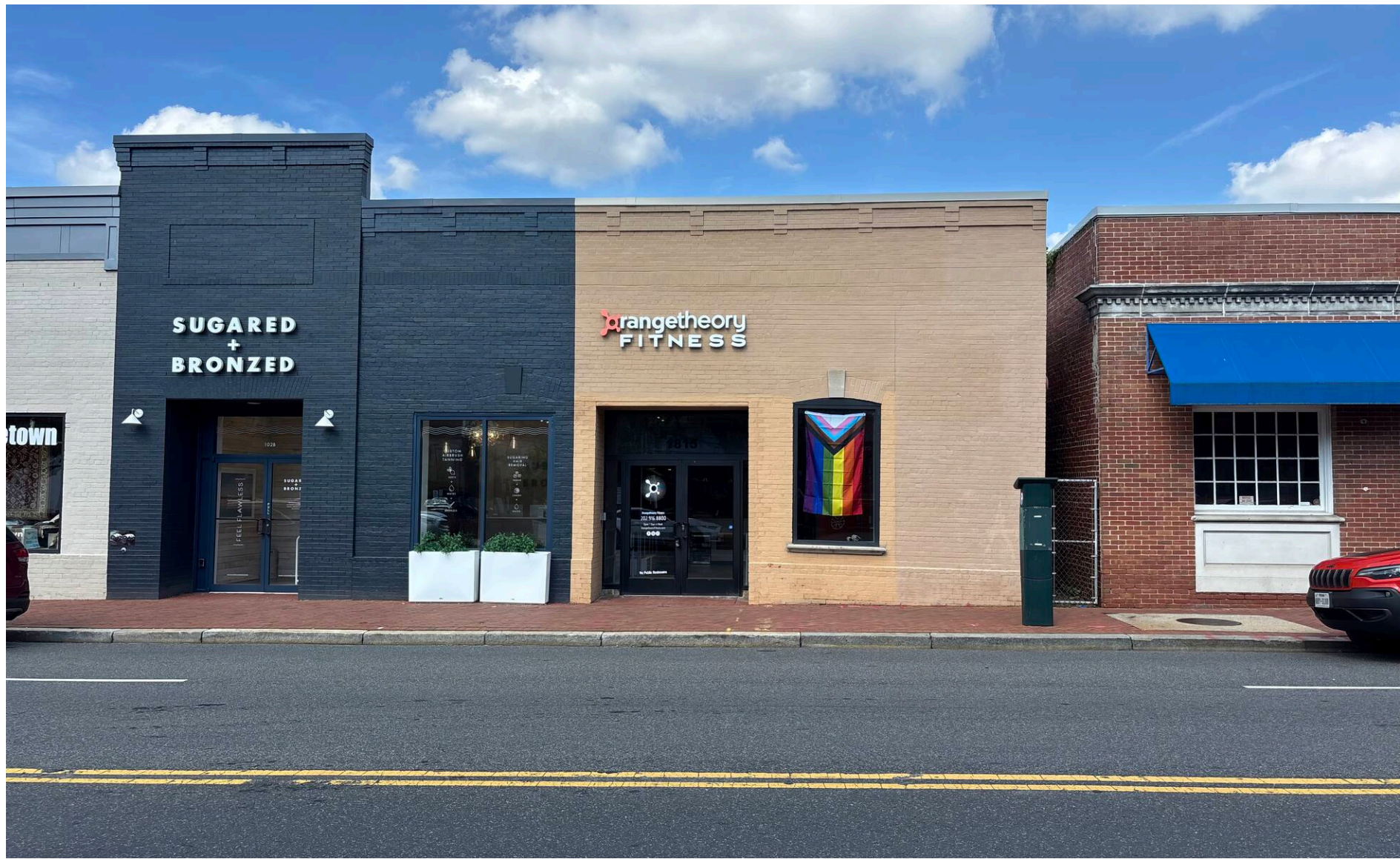
3,234 SF available

RAPPAPORT
CULTIVATING PLACES[®]

Washington

District of Columbia

- 13,801 SF open-air neighborhood center adjacent to the 67,039 SF Safeway
- Excellent visibility with 35,000 vehicles driving by the site daily
- Situated in the highly affluent north Georgetown/Glover Park neighborhoods
- Co-tenants include United Bank, Drybar, and Paisano



2026 Demographics

	0.25 mi.	0.5 mi.	1 mi.
Population	1,194	7,517	33,673
Daytime Population	1,087	6,798	35,840
Household Income	\$358,534	\$314,558	\$229,775
Traffic Counts	35,000 on Wisconsin Avenue		

Area Retailers





TRADER JOE'S

THE GLOVER HOUSE
266 APARTMENT UNITS

BRITISH INTERNATIONAL
SCHOOL OF WASHINGTON

citibank

SAFEWAY



Georgetown
Shops



LONG & FOSTER®
REAL ESTATE

A / R
ADDISON / RIPLEY
FINE ART

CROSS MACKENZIE

MAURINE LITTLETON GALLERY

CALLOWAY
FINE ART & CONSULTING

TD Bank

EXXON

CapitalOne

GEROGETOWN
UNIVERSITY
5,365 + STUDENTS

Georgetown Shops

Site Plan

3,234 SF available

Space #	Sq. Ft.	Tenant
100	3,141	Georgetown Carpet
102A	3,234	Available
102B	1,436	Sugared + Bronzed
104	1,365	Paisano's
106	1,983	United Bank
108	1,664	DryBar
110	776	Perfect Eyebrows



Discover your next retail opportunity at
rappaportco.com



WASHINGTON, D.C. | MARYLAND | VIRGINIA

GEORGETOWN SHOPS | 1815-1825 NORTH WISCONSIN AVE, WASHINGTON, DC

Melissa Webb | mwebb@rappaportco.com | 703.980.6829