



# Spring Valley Village Office

Washington, DC

Executive Office Suites Available



# Washington

District of Columbia

- Thoughtfully designed office space featuring private offices, common area with kitchenette, coffee stations, conference room, huddle rooms, and more
- Originally developed in 1939, fully renovated in 2020
- Designated surface parking on-site
- Located alongside fully-leased trophy shopping center on Massachusetts Ave in Washington, D.C.
- Located 3 miles south of Bethesda, and 3 miles north of Georgetown. Half mile from American University with 14,800 students



## 2026 Demographics

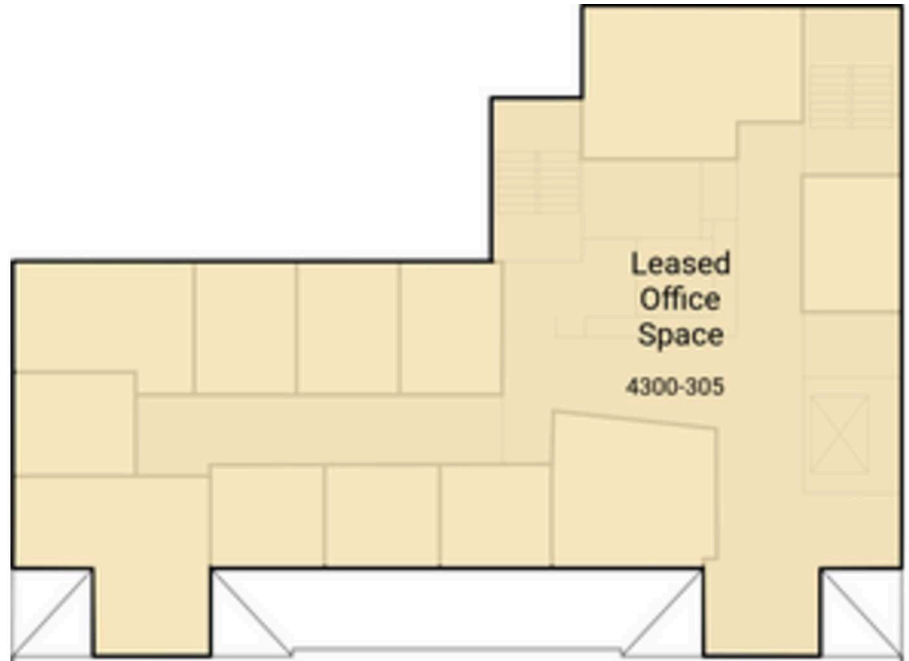
	.25 mi.	.5 mi.	1 mi.
<b>Population</b>	11,163	4,980	20,837
<b>Daytime Population</b>	207	3,564	10,255
<b>Household Income</b>	\$309,959	\$377,226	\$321,606
<b>Traffic Counts</b>	19,599 on Massachusetts Ave NW		

## Area Retailers

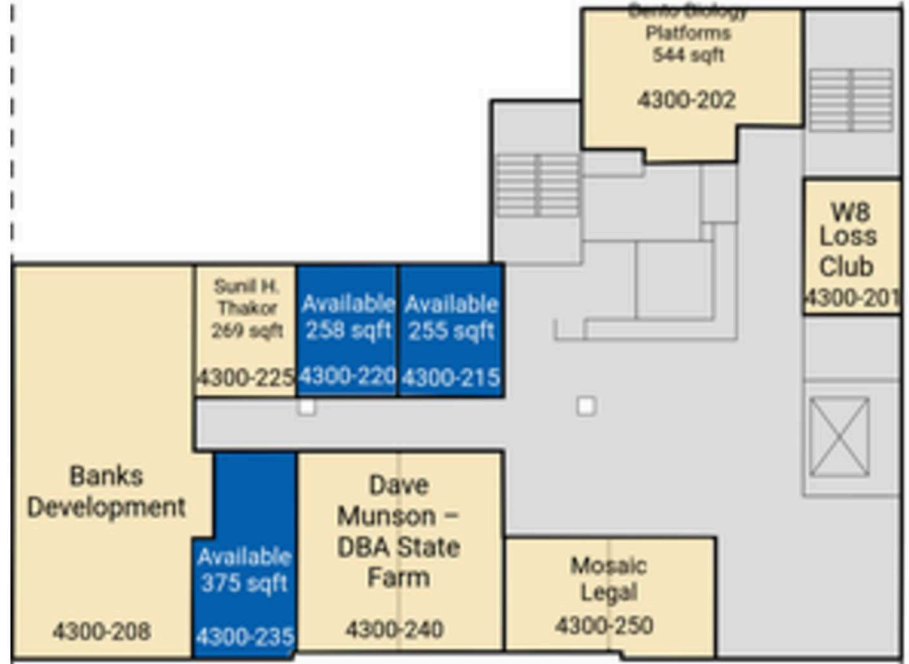
# Site Plan

255 - 2,578 SF available

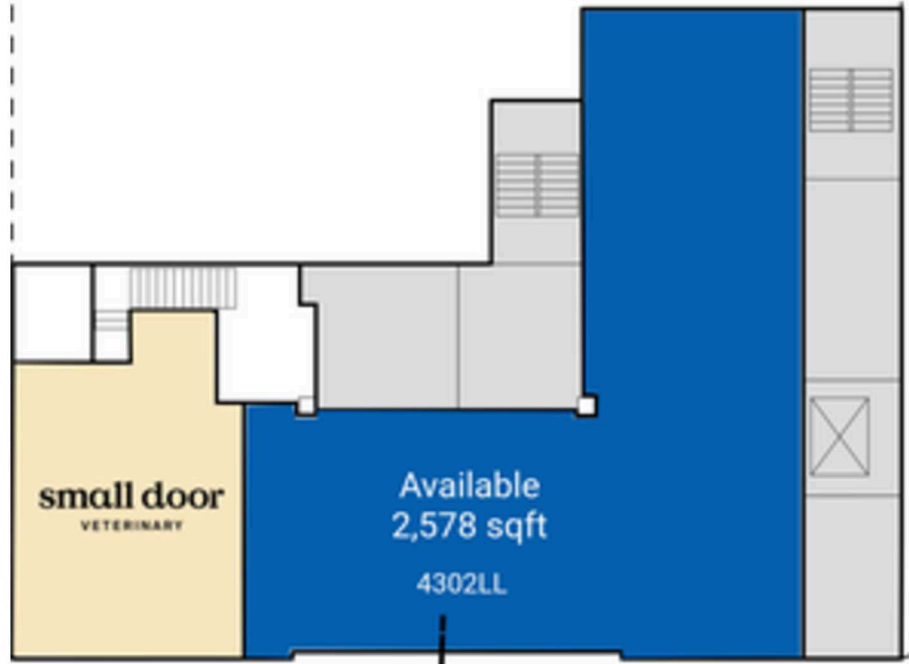
● Space Available



THIRD LEVEL PLAN

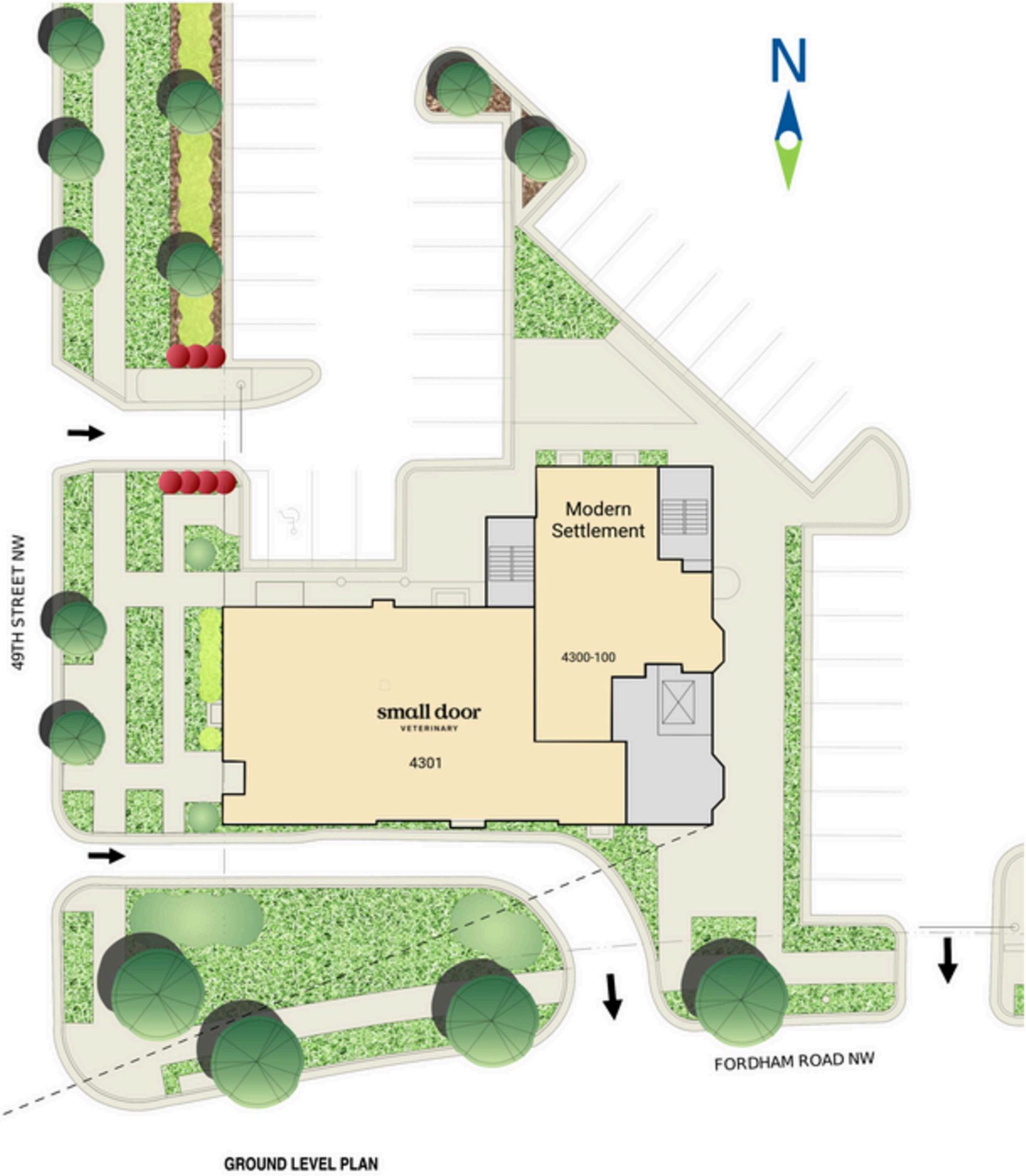


SECOND LEVEL PLAN



LOWER LEVEL PLAN

Space is Best Fit for Fitness Users



GROUND LEVEL PLAN

# Tenant List

Space #	Sq. Ft.	Tenant
4300-100	1,123	Modern Settlement
4300-201	330	W8 Loss Club
4300-202	544	Bento Biology Platforms
4300-208	1,206	Banks Development
4300-215	255	Available

Space #	Sq. Ft.	Tenant
4300-220	258	Available
4300-225	269	Sunil H. Thakor
4300-235	375	Available
4300-240	715	Dave Munson – DBA State Farm
4300-250	455	Mosaic Legal

Space #	Sq. Ft.	Tenant
4300-305	3,545	Leased Office Space
4301	3,221	Small Door Veterinary
4302LL	2,578	Available

# The Property



**Discover your next retail opportunity at**  
**rappaportco.com**



**WASHINGTON, D.C. | MARYLAND | VIRGINIA**

**SPRING VALLEY VILLAGE OFFICE | 4300 FORDHAM ROAD NW, WASHINGTON, DC**

**Bill Dickinson | [bdickinson@rappaportco.com](mailto:bdickinson@rappaportco.com) | 703.310.6983**

**Mike Howard | [mhoward@rappaportco.com](mailto:mhoward@rappaportco.com) | 571.382.1219**

**Emily Whalen | [ewhalen@rappaportco.com](mailto:ewhalen@rappaportco.com) | 860.906.2413**