



# Takoma Central

Washington, DC

1,053 SF available

**RAPPAPORT**  
CULTIVATING PLACES



# Washington

District of Columbia

- 1,053 SF opportunity adjacent to Busboys & Poets
- Located in a mixed-use development beneath 150 residential units
- Neighboring retail includes Busboys & Poets, Yoga Heights, Starbucks, and CVS Pharmacy
- Centrally located only one block from the Takoma Metro Station



## 2026 Demographics

	1 mi.	3 mi.	5 mi.
<b>Population</b>	29,796	277,387	753,087
<b>Daytime Population</b>	10,319	93,006	394,754
<b>Household Income</b>	\$155,808	\$148,131	\$166,664
<b>Traffic Counts</b>	13,000 on Carroll Street NW 12,000 on Eastern Avenue		

## Area Retailers





# Takoma Central



CARROLL ST 13,000 VPD

CEDAR ST 5,000 VPD



4TH ST NW



WILLOW ST NW

EASTERN AVE 12,000 VPD

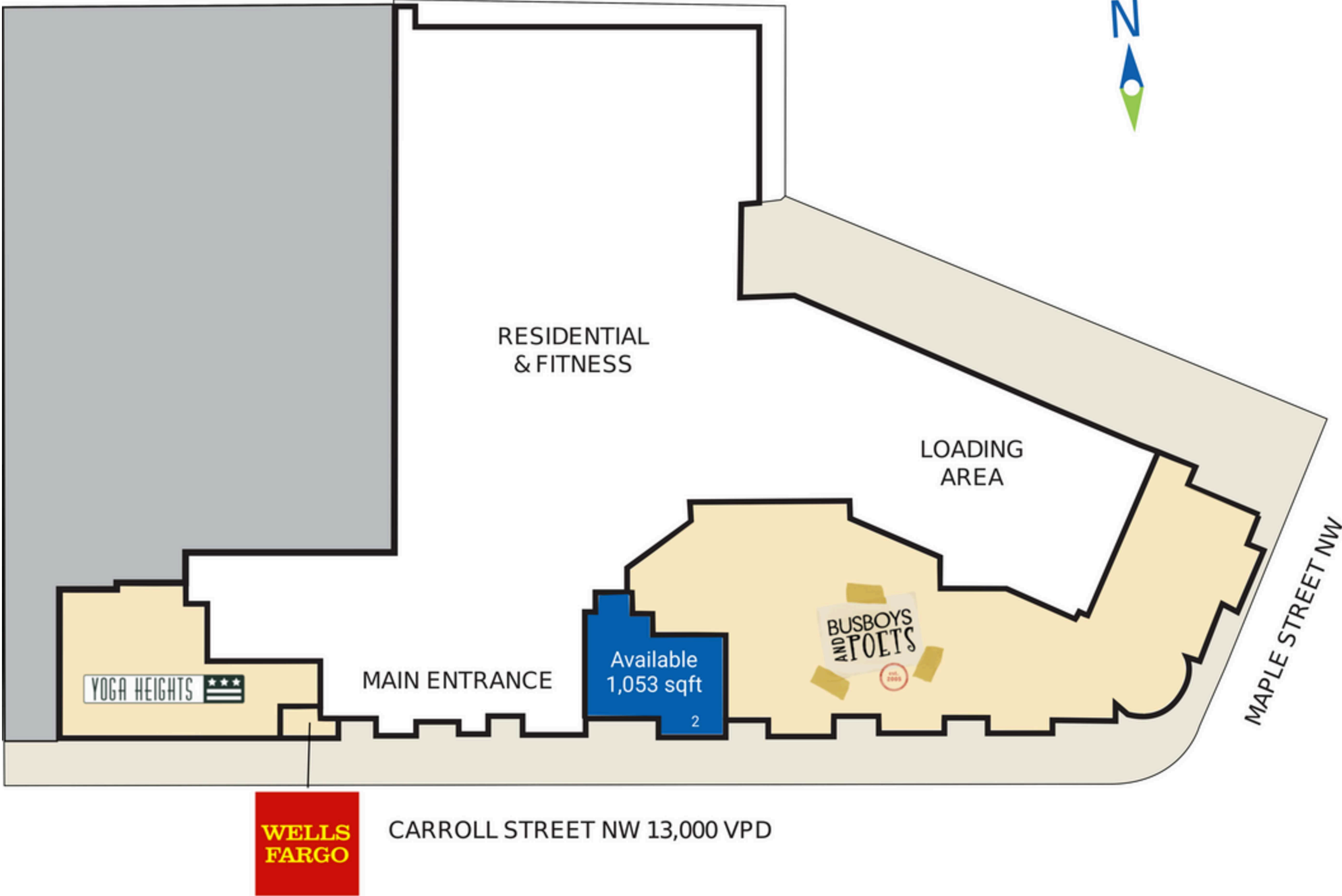


LAUREL ST NW

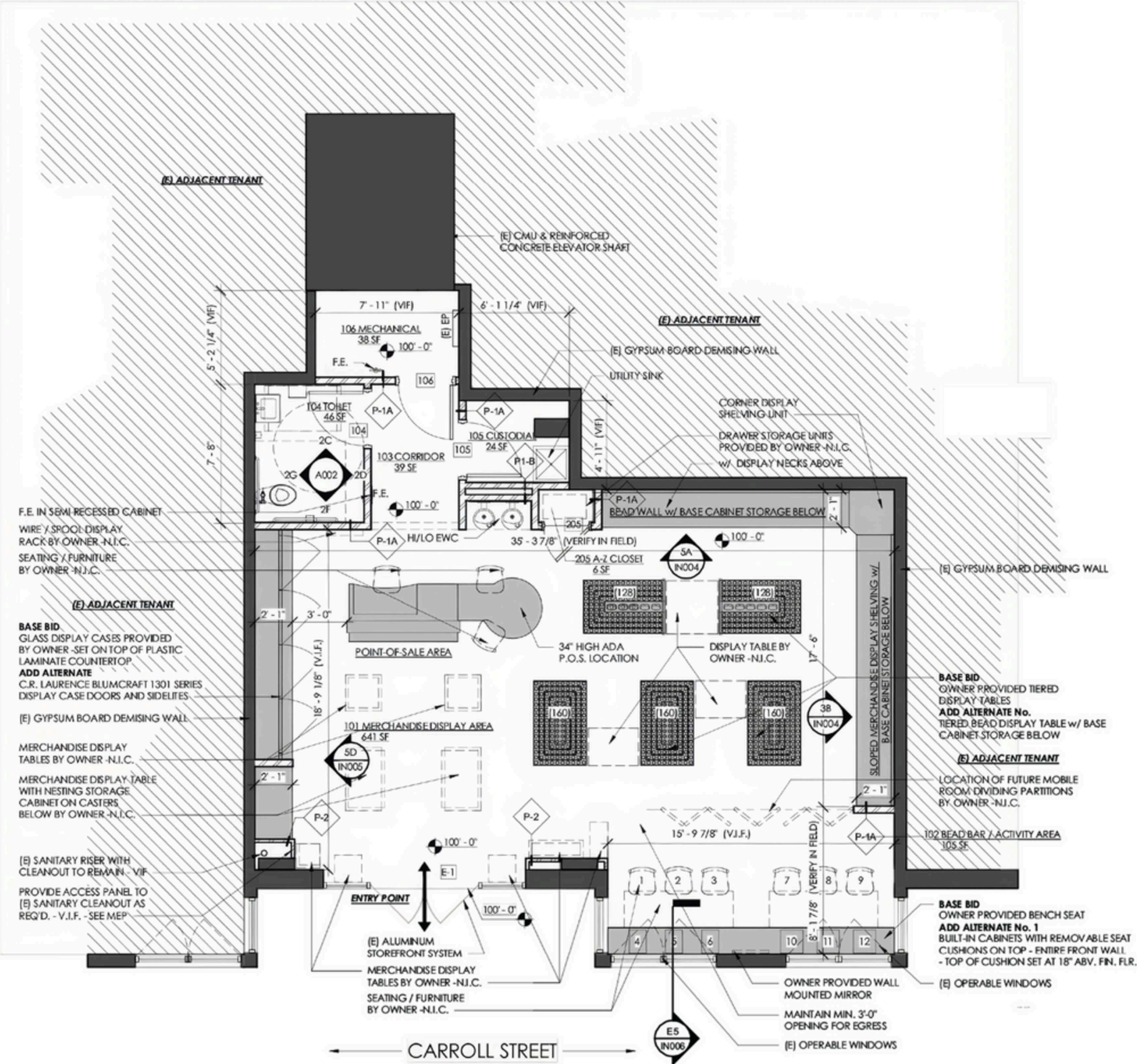
# Site Plan

1,053 SF available

Space #	Sq. Ft.	Tenant
1	6,933	Busboys and Poets
2	1,053	Available
3	92	Wells Fargo
4	1,972	Yoga Heights



# Space 2



**Discover your next retail opportunity at**  
**rappaportco.com**



**WASHINGTON, D.C. | MARYLAND | VIRGINIA**

**TAKOMA CENTRAL | 235-255 CARROLL STREET NW, WASHINGTON, DC**

**Thomas Bolen III | [tbolen@rappaportco.com](mailto:tbolen@rappaportco.com) | 571.382.1291**

**Bill Dickinson | [bdickinson@rappaportco.com](mailto:bdickinson@rappaportco.com) | 703.310.6983**

**Emily Whalen | [ewhalen@rappaportco.com](mailto:ewhalen@rappaportco.com) | 860.906.2413**