



ROUTE  OCEAN GATEWAY 34,871 VPD

8493 Ocean Gateway
Easton, MD

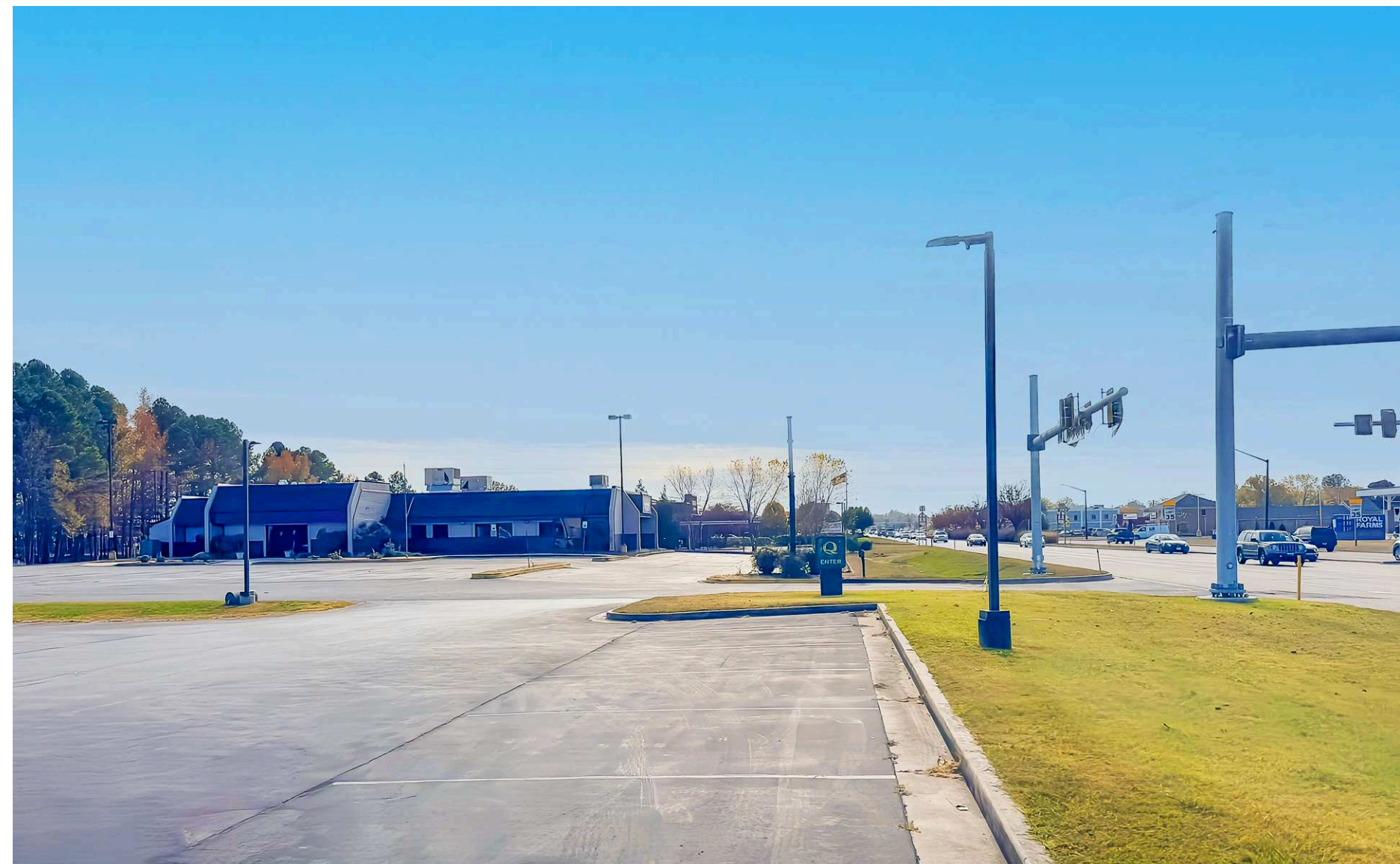
5,712 SF available



Easton

Maryland

- 5,712 SF free-standing building, formerly a Denny
- Conveniently located at a fully signalized light (shared with Royal Farms)
- Prime location directly off Ocean Gateway (Route 50), with 34,871 vehicles per day, featuring a large, dedicated monument sign
- Area retailers include Dunkin', Royal Farms, Dairy Queen, and Burger King



2025 Demographics

	3 mi.	5 mi.	7 mi.
Population	18,297	22,722	24,679
Daytime Population	10,961	12,129	12,327
Household Income	\$95,433	\$111,899	\$112,433
Traffic Counts	34,871 on Ocean Gateway		

Area Retailers





LOWE'S

Chick-fil-A

Easton Marketplace
KOHL'S **ULTA** **weis**

Easton Plaza
HARBOR FREIGHT **FAMILY DOLLAR**

Tred Avon Square
ACME **tropical CAFE** **Shore United**

Easton Historic District
POPULATION: 7,000
RESIDENTIAL UNITS:
9,000 buildings

UM Shore Regional
Health Pain
Management Center

ROYAL FARMS **Educational Systems**
Federal Credit Union

McDonald's

50

OCEAN GATEWAY 34,871 VPD

8493 Ocean Gateway

Sakura **Crabtree**

Wendy's

Hardee's

CVS pharmacy

Wendy's **verizon**

Staples **ROCKETS**

Auto Zone **jiffylube**

Walgreens

MATTRESS Warehouse **Wawa**

ALDI

Walmart **Giant** **DOLLAR TREE**

DOVER ROAD

TACO BELL **Advance Auto Parts** **Hot Stuff**

Saints Peter and Paul Elementary and Middle School

8493 Ocean Gateway



BURGER KING

ROYAL FARMS

**Educational Systems
Federal Credit Union**

50

OCEAN GATEWAY 34,871 VPD

Quality
BY CHOICE HOTELS

Monument

8493 Ocean Gateway

Sakura

DUNKIN'

**Easton Diner &
Family Restaurant**

8493 Ocean Gateway

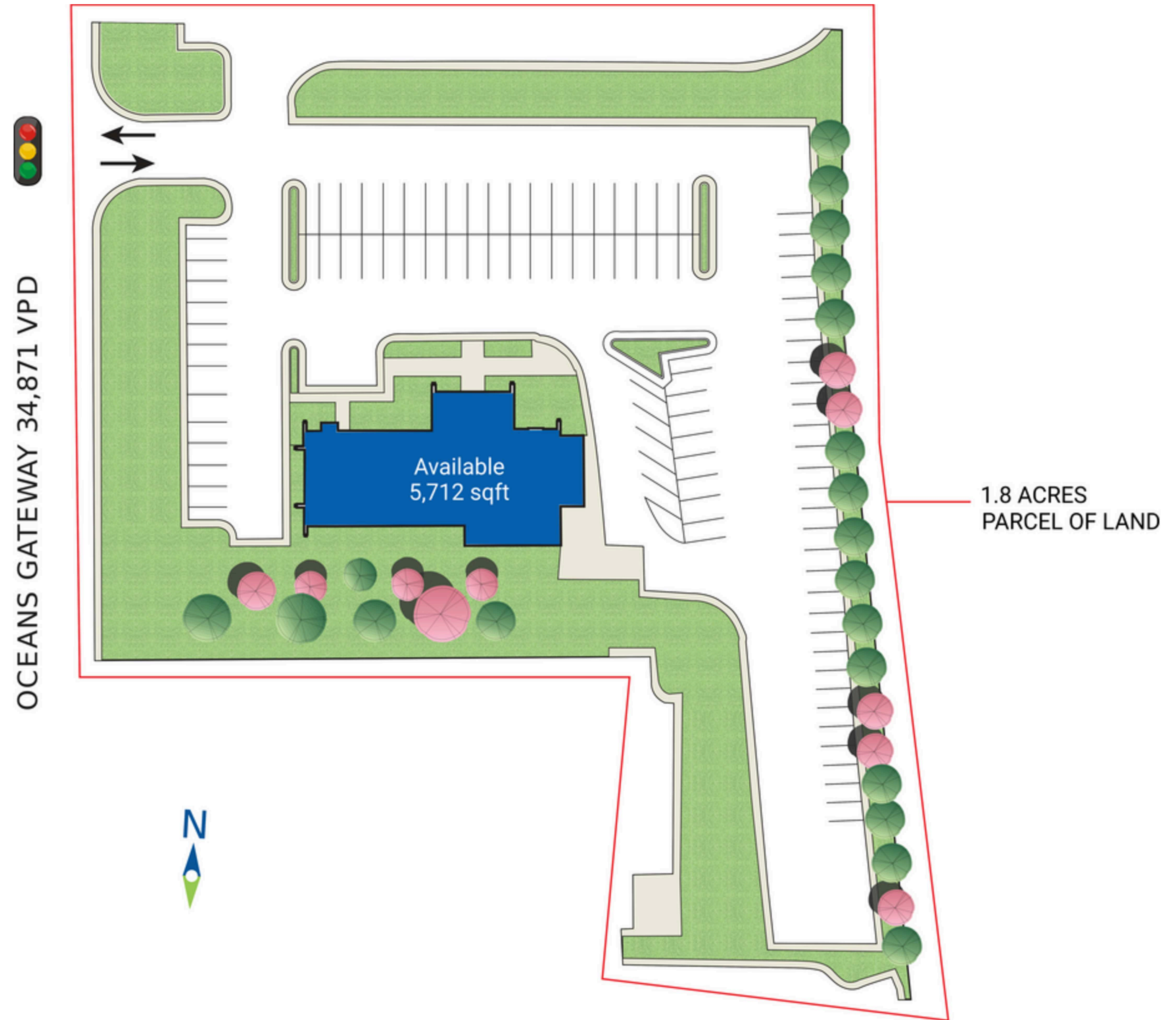
RAPPAPORT
CULTIVATING PLACES[®]

Site Plan

5,712 SF available

Space #	Sq. Ft.	Tenant
1	5,712	Available

● Space Available



Discover your next retail opportunity at
rappaportco.com



WASHINGTON, D.C. | MARYLAND | VIRGINIA

8493 OCEAN GATEWAY | 8493 OCEAN GATEWAY, EASTON, MD

Kyle Gamber | kgamber@rappaportco.com | 571.382.1216

Susan Bourgeois | sbourgeois@rappaportco.com | 571.382.1288