



Two Constitution Square
Washington, DC

5,972 SF available



Washington

District of Columbia

- Fully built-out vented restaurant opportunity in NoMa with potential patio
- 1 Block from NoMa Metro (Red Line)
- Cotenants include Harris Teeter, Starbucks, and Potbelly
- Located in the densely populated NoMa neighborhood which boasts over 49,000 residents, 60,000 daytime employees, 1,501 hotel keys and 105,000 pedestrians daily
- Tremendous growth of demographics with over 7,800 residential units planned or currently under construction
- Flexible restaurant demising options



2026 Demographics

	1 mi.	3 mi.	5 mi.
Population	74,367	402,327	814,447
Daytime Population	80,031	532,382	780,024
Household Income	\$167,109	\$165,753	\$153,362
Traffic Counts	67,000 on New York Ave		

Area Retailers



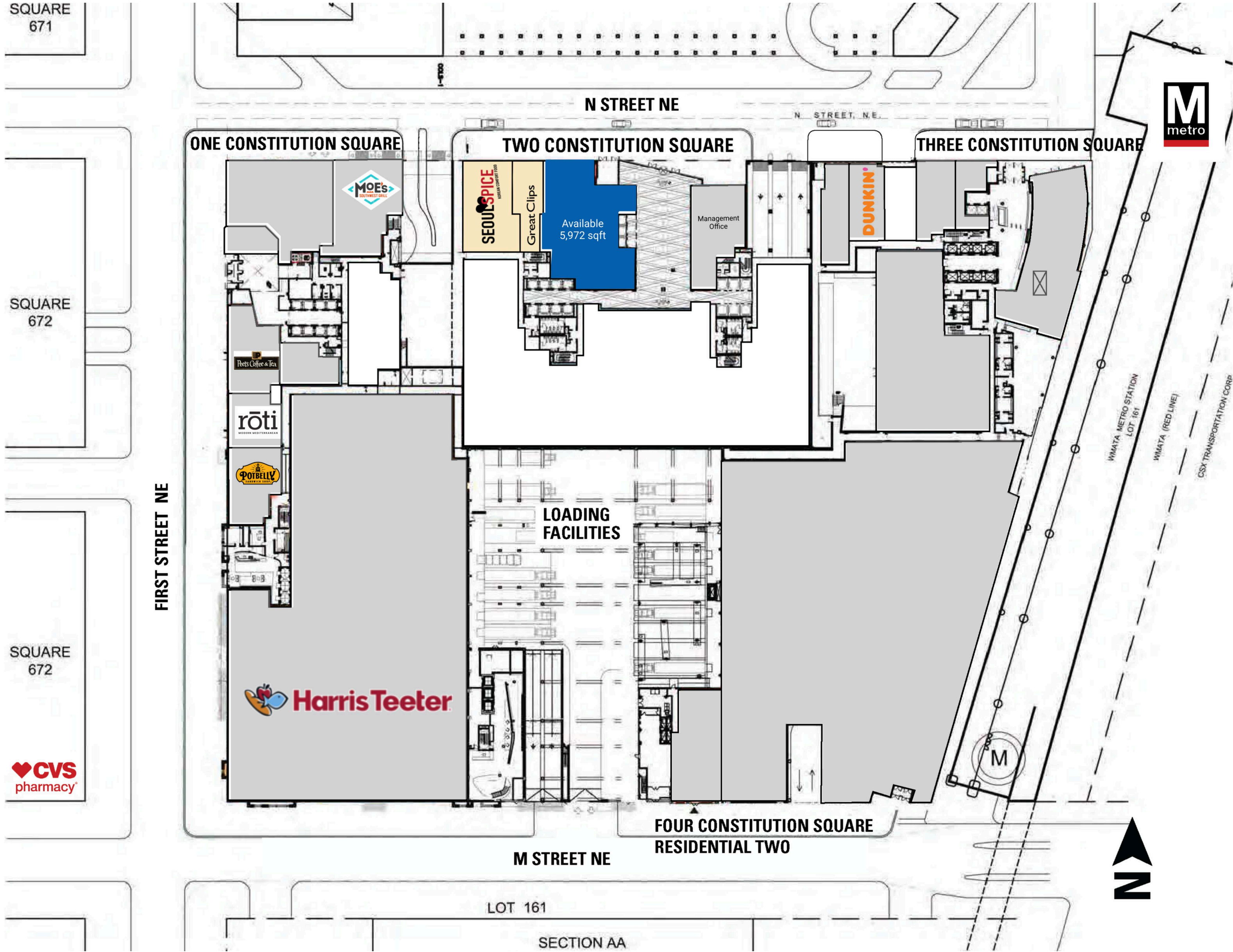


Site Plan

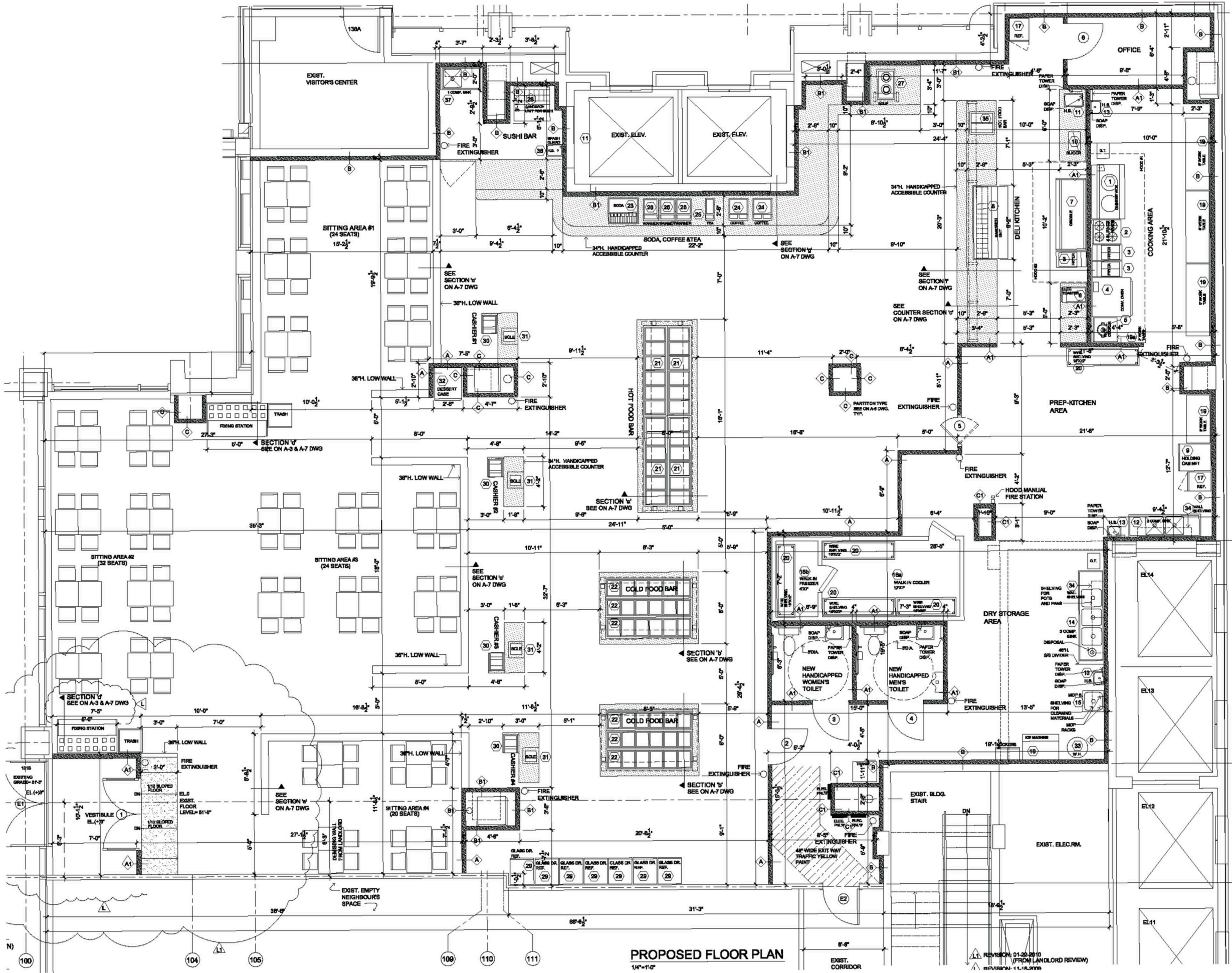
5,972 SF available

Space #	Sq. Ft.	Tenant
2-1	2,740	SeoulSpice
2-2	1,086	Great Clips For Hair
2-3	5,972	Available

● Space Available



LOD Space Plan



N STREET NE

● Space Availa

Discover your next retail opportunity at
rappaportco.com



WASHINGTON, D.C. | MARYLAND | VIRGINIA

TWO CONSTITUTION SQUARE | 145 N ST NE, WASHINGTON, DC

Mike Howard | mhoward@rappaportco.com | 571.382.1219

Kyle Gamber | kgamber@rappaportco.com | 571.382.1216